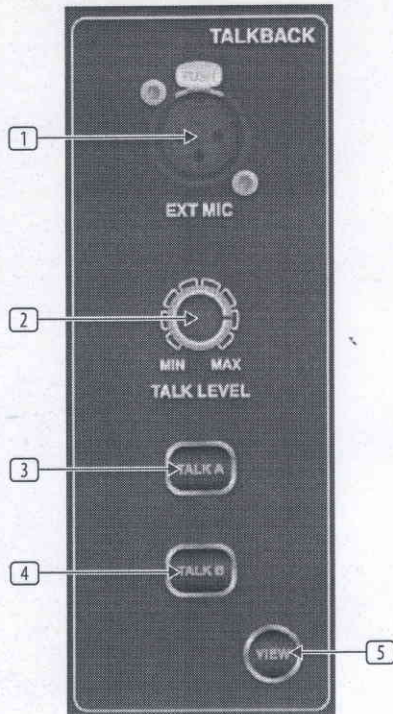


1.12 Talkback



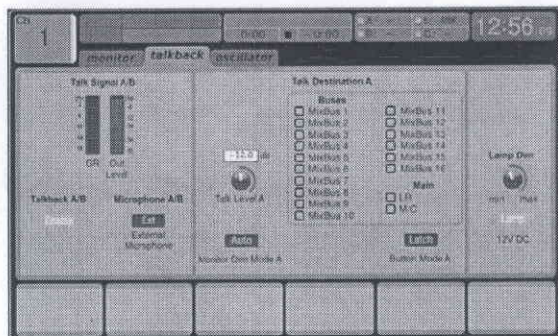
- 1 **EXT MIC Port**
Connect a microphone to the console via a standard XLR cable. The output carries 48 V phantom power, allowing the use of condenser or dynamic microphones.
- 2 **TALK LEVEL Rotary Control**
Adjust the level of the Talkback volume with the **TALK LEVEL** rotary control.
- 3/4 **TALK A / B**
Select the destination of the Talkback mic signal with either the **TALK A** or **TALK B** buttons. Press the **VIEW** button to edit the Talkback routing for A and B.
- 5 **VIEW**
Press the **VIEW** button to access more detailed parameters on the Main Display.

Operation

talkback Tab

The **TALKBACK** screen offers various adjustments for the talkback paths of the console, such as destination of the talkback signal and more.

To adjust the various settings on the **talkback** tab, perform the following steps:

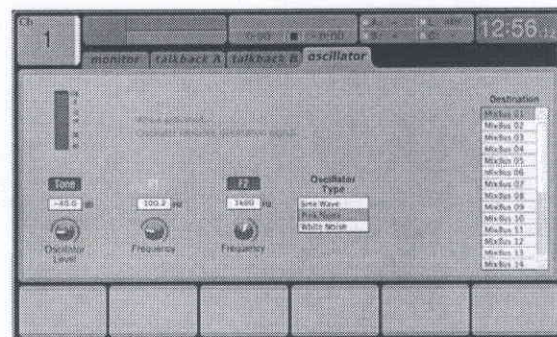


- 1. The screen displays a multi-segment level meter showing the strength of the talkback signal as it has currently been set. It also displays a multi-segment gain reduction meter, showing the user how much compression has been automatically applied to the talkback signal.
- 2. Tap the first push encoder to enable the talkback circuit. The internal/external talkback microphone will now transmit audio to the **talkback** path's assigned destination.
- 3. Adjust the third encoder to set the gain of the **talkback** signal. This is an additional gain stage that follows the initial gain stage set by the top panel **TALK LEVEL** control.
- 4. Tap the third encoder to toggle on/off the talkback circuits 'auto-dim' function. This function is useful in a studio setting, and will automatically dim the control room outputs when the talkback circuit is active. This prevents the talkback microphone from picking up too much sound from the nearby studio monitors.
- 5. Adjust the fourth encoder to scroll through the various talkback destinations, which include:
 - Mix Bus 1-16
 - LR Bus
 - Centre/Mono Bus.
- 6. Tap the fourth encoder to activate any talkback destination when it is currently selected. Multiple talkback destinations can be selected, allowing the talkback signal to reach many destinations at the same time.
- 7. Tap the fifth encoder to toggle the dedicated top-panel talkback buttons between latching and non-latching operation.
- 8. Turn the sixth encoder to adjust the brightness of the lamp that is connected to the console's rear panel lamp connector.
- 9. Tap the sixth encoder to toggle the attached lamp on or off.

oscillator Tab

The **oscillator** tab offers controls for the console's onboard oscillator, a very handy tool that can be used for setting up PA systems and testing various signal flow paths without the need for a live source feeding a microphone. Settings include oscillator type, frequency, volume and routing destinations.

To adjust the various settings on the oscillator tab, perform the following steps:



- 1. Adjust the first push encoder to set the level of the onboard oscillator.
- 2. Tap the first encoder to toggle the oscillator on or off.
 - The Main Display shows a multi-segment level meter that shows the current level of the oscillator.
- 3. Adjust the second encoder to set the frequency of the primary onboard oscillator.
- 4. Adjust the third encoder to set the frequency of the alternate onboard oscillator.
- 5. Tap the third encoder to alternate between Sine F1 and Sine F2.